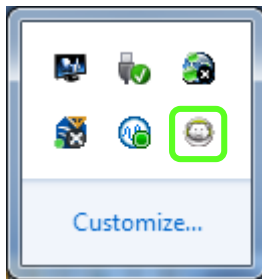


DEEFPREEZE How To Guide

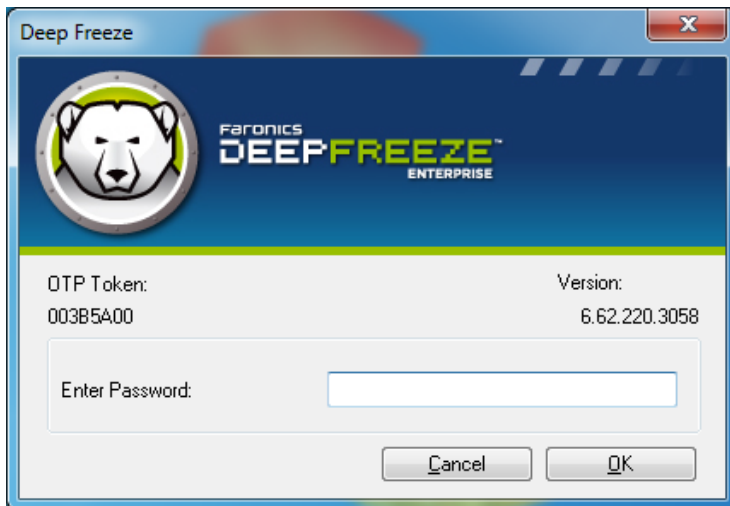
Thawing the Computer:



Select the arrow on the right side of the start bar to show hidden icons.



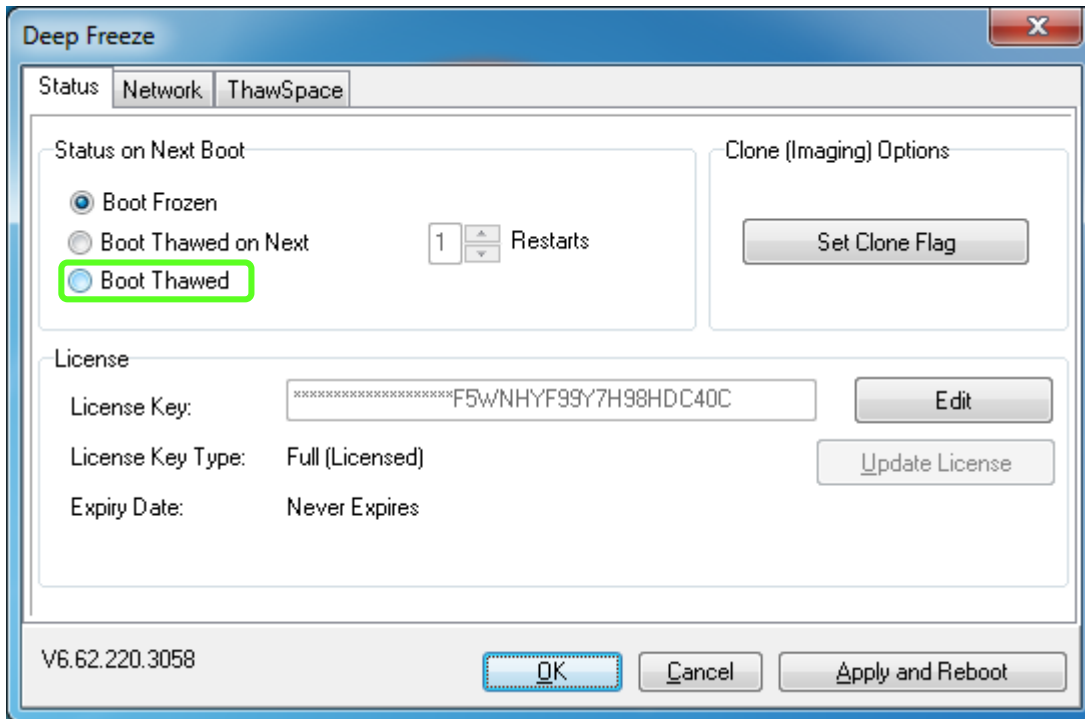
Select the polar bear icon to open DEEFPREEZE. (HOLD DOWN **SHIFT** and **Double Click**)



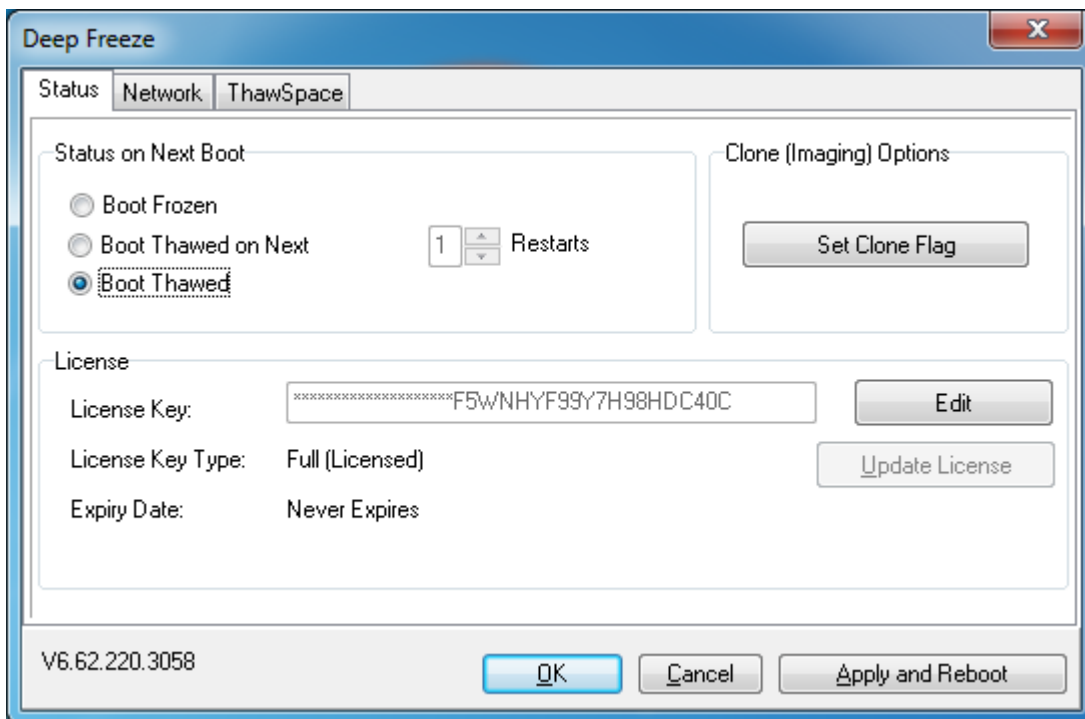
Enter the password - ********* and select **OK**.

Please contact the NLLS HQ for the password

DEEPPFREEZE How To Guide

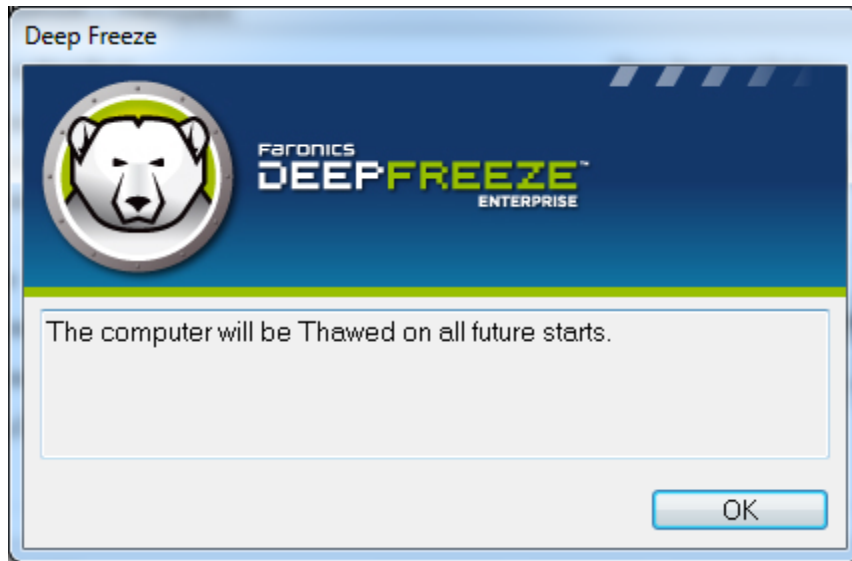


When the above window appears, select **Boot Thawed**.



Then select **OK**.

DEEPPFREEZE How To Guide



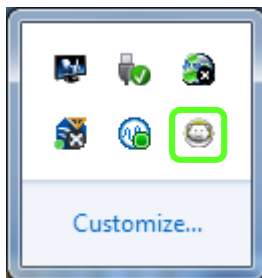
When the above message appears, select **OK**, and restart the computer for the changes to take effect.

DEEFPREEZE How To Guide

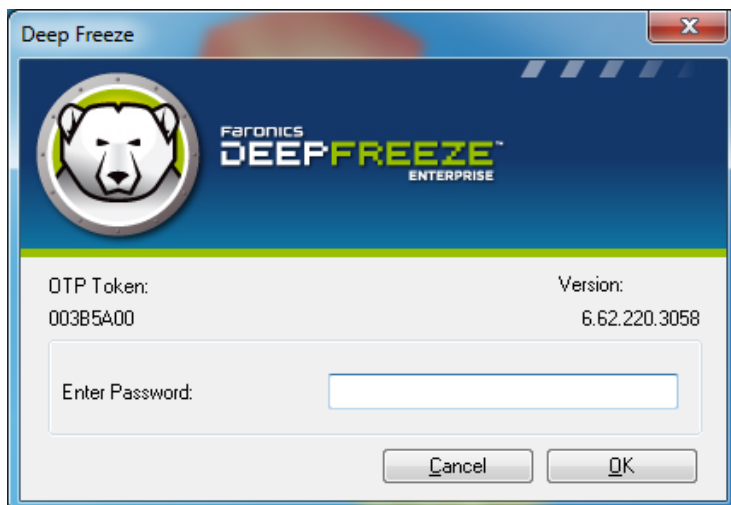
Freezing the Computer:



Select the arrow on the right side of the start/tool bar to show hidden icons.



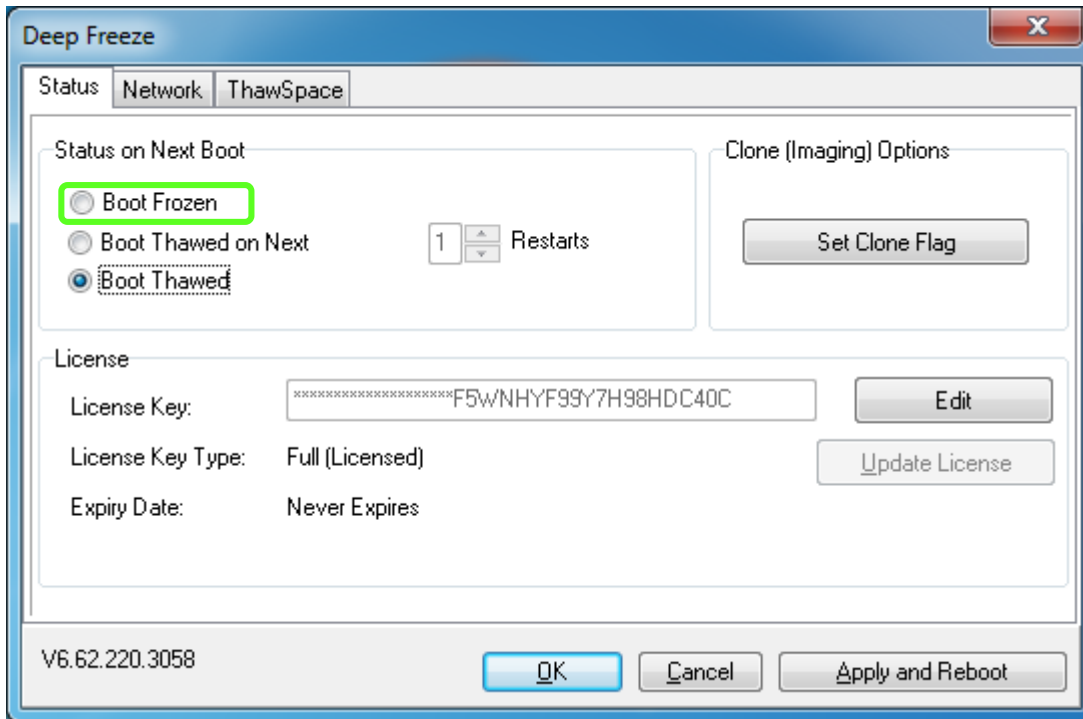
Select the polar bear icon to open DEEFPREEZE.



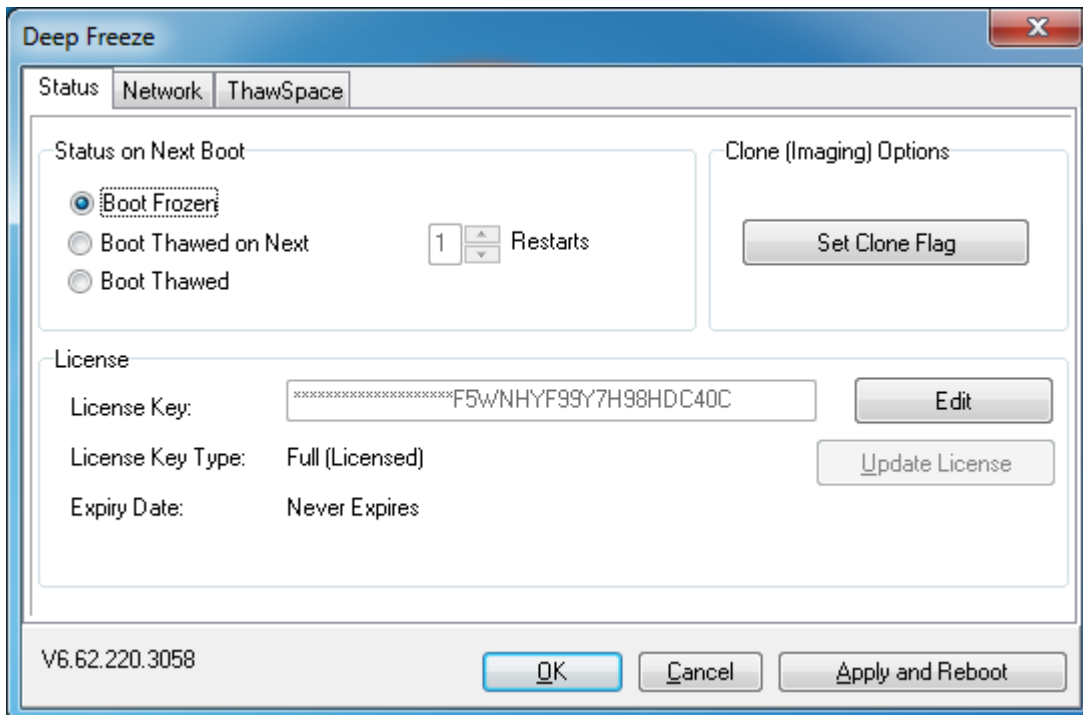
Enter the password - ***** and select **OK**.

Please contact the NLLS HQ for the password

DEEFPREEZE How To Guide

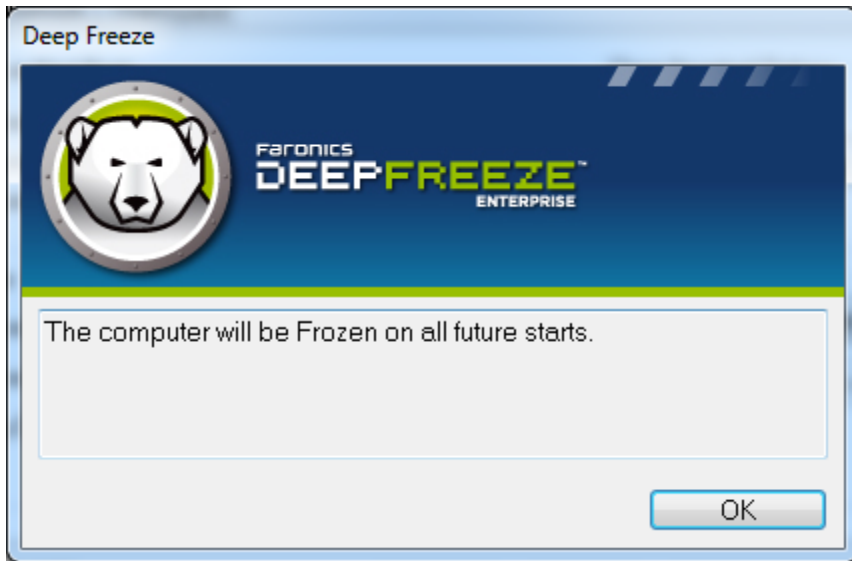


When the above window appears, select **Boot Frozen**.



Then select **OK**.

DEEPPFREEZE How To Guide



When the above message appears, select **OK**, and restart the computer for the changes to take effect.