

PIGEON LAKE

EMERGENCY BYPASS CONNECTION WITH NORMALLY CLOSED VALVE

SUMMER VILLAGE OF MA-ME-O BEACH

HWY 13A/2 AVE

HWY 13

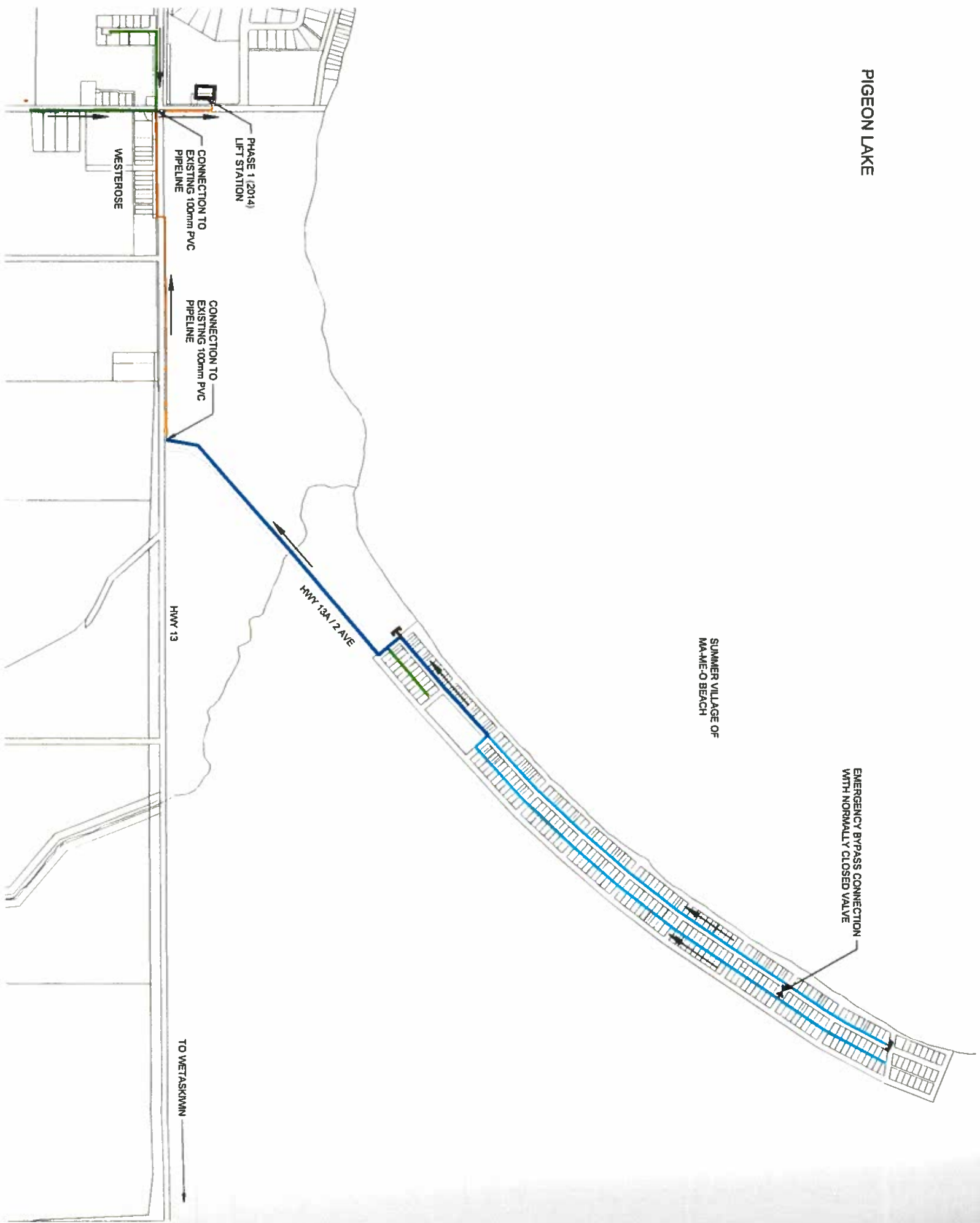
TO WETASKIWIN

WESTEROSE

PHASE 1 (2014) LIFT STATION

CONNECTION TO EXISTING 100mm PVC PIPELINE

CONNECTION TO EXISTING 100mm PVC PIPELINE



LEGEND

- 75mm HDPE DR11 PIPE
- 100mm HDPE DR11 PIPE
- 100mm PVC DR18 PIPE (EXISTING)
- 150mm HDPE DR11 PIPE
- 200mm HDPE DR11 PIPE
- 250mm PVC PIPE (EXISTING GRAVITY LINE)
- DIRECTION OF FLOW
- FUTURE TIE IN EMERGENCY BYPASS CONNECTION



Engineering Ltd.

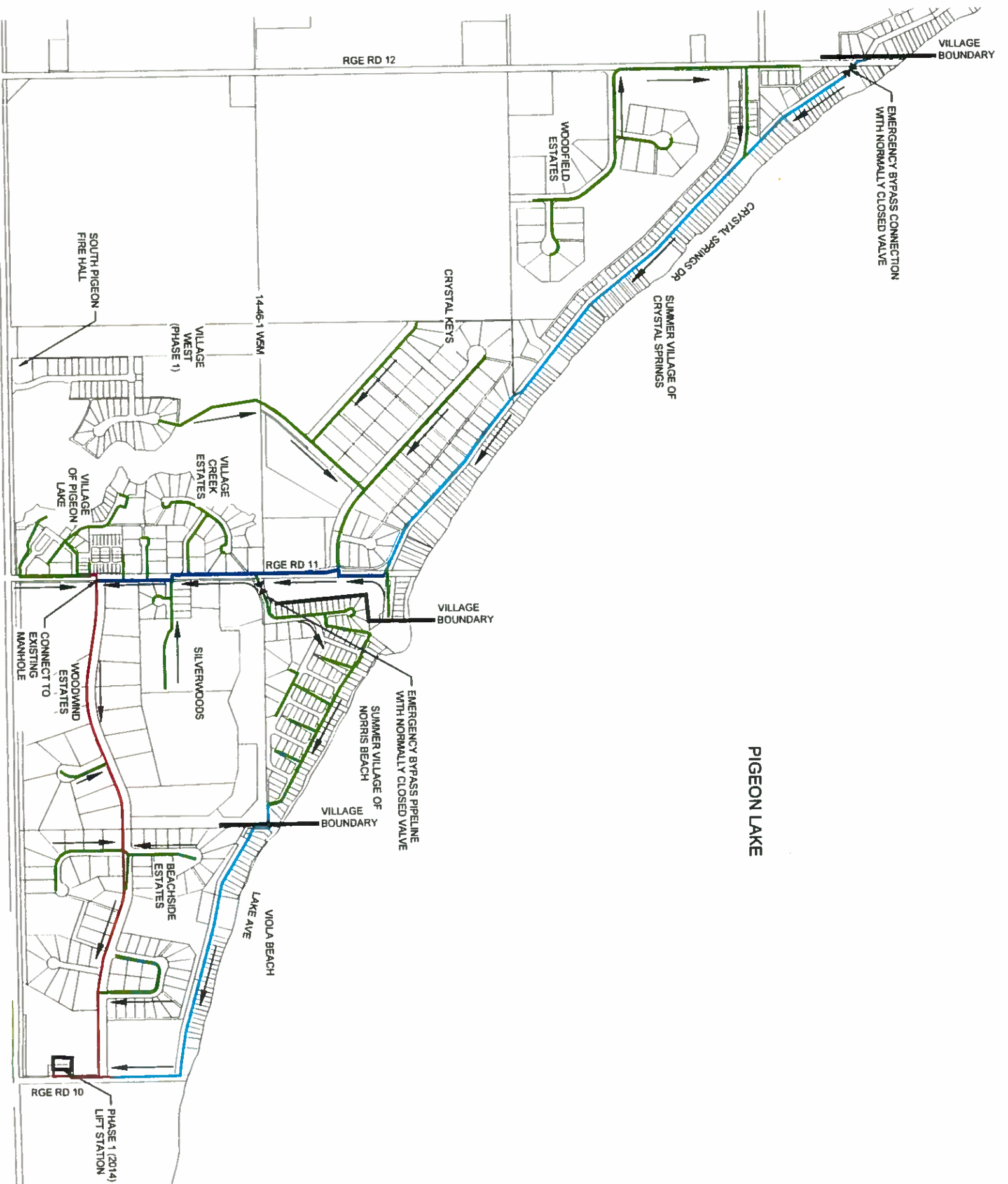
SOUTH SIDE WASTEWATER COMMITTEE

SOUTH SIDE PIGEON LAKE WASTEWATER COLLECTION SYSTEM SECTION A: MA-ME-O BEACH PROPOSED SYSTEM LAYOUT


SCALE: 1:15 000 DATE: APRIL 2016

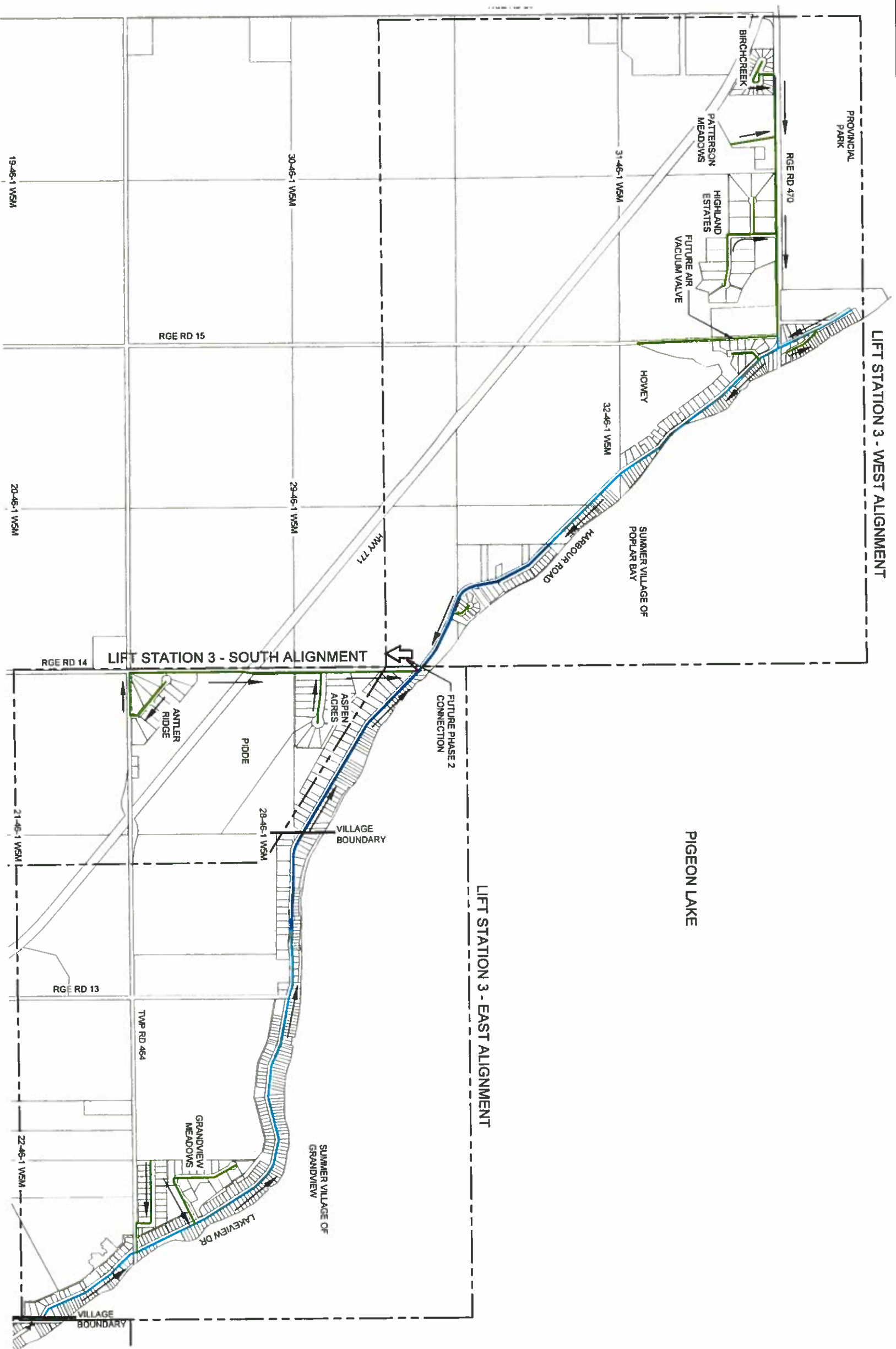
JOB: 4010-003-00 FIGURE: 1





- LEGEND**
- 75mm HDPE DR11 PIPE
 - 100mm HDPE DR11 PIPE
 - 100mm PVC DR18 PIPE (BY OTHERS)
 - 150mm HDPE DR11 PIPE
 - 200mm HDPE DR11 PIPE
 - 250mm PVC PIPE (EXISTING GRAVITY LINE)
 - DIRECTION OF FLOW
- ↔ EMERGENCY BYPASS CONNECTION

 <p>Engineering Ltd.</p>		<p>SOUTH SIDE WASTEWATER COMMITTEE</p> <p>SOUTH SIDE PIGEON LAKE WASTEWATER COLLECTION SYSTEM SECTION B: CRYSTAL SPRINGS PROPOSED SYSTEM LAYOUT</p>	
SCALE: 1:15 000	DATE: APRIL 2016	JOB: 4010-003-00	FIGURE: 2



- LEGEND**
- 75mm HDPE DR11 PIPE
 - 100mm HDPE DR11 PIPE
 - 100mm PVC DR18 PIPE (BY OTHERS)
 - 150mm HDPE DR11 PIPE
 - 200mm HDPE DR11 PIPE
 - 250mm PVC PIPE (EXISTING GRAVITY LINE)
 - DIRECTION OF FLOW

	SOUTH SIDE WASTEWATER COMMITTEE	
	SOUTH SIDE PIGEON LAKE WASTEWATER COLLECTION SYSTEM SECTION C: LIFT STATION 2 PROPOSED SYSTEM LAYOUT	
SCALE: 1:20 000	DATE: MAY 2016	JOB: 4010-003-00
		FIGURE: 3