


The slide features a white background with abstract blue geometric shapes on the left and right sides. The shapes consist of various shades of blue, from light to dark, forming overlapping triangles and polygons. The text is centered in a dark blue, sans-serif font.


Northern Lights Library System

- **History**
- **System Members**
- **Funding**
- **Organization and Departments**


So why and how did the system develop?




I would like to buy some new books but I just don't have time to go to the city!



I would like a new database but my little library really can't afford it!



I'm a brand new library manager, what's a plan of service? I could really do with some help!



I would like to have a stable and affordable connection to the internet for my patrons!

Establishing a library system

- ▶ A request is made to the minister under the libraries act
- ▶ A governing board is established for the system under the same act
- ▶ Northern Lights Library System was established in June of 1990



Northern Lights Library System



System Members

- ▶ 13 Counties - 6 have County Library Board
- ▶ 45 Libraries - 43 autonomous libraries
 - 1 MoU
 - 1 Branch
 - 8 Summer Villages

Funding

- ▶ **The Levy**
Municipal and County
- ▶ **The Book Allotment**
- ▶ **The Grants**

- ▶ Who decides on the levy
- ▶ How much is the levy
- ▶ Who pays the levy

The levy

Municipality levy

Municipality @ \$5.07 per capita & Local Library board @ \$5.07 per capita

Combined, the levy is \$10.14 per capita

County levy

County @ \$5.07 per capita & County Library Board @ \$5.07 per capita

Combined, the levy is \$10.14 per capita

The Levy

County Without a County Library Board

However, if the County does not appoint a County Library Board then the County is required to pay the County and the County Library Board levy.

County @ \$10.14

The Levy

Paying the Levy

- ▶ January Invoice:

The county with no board are invoiced for \$10.14

OR

The County is invoiced for \$5.07

The County Library Board invoiced for \$5.07

AND

The Municipalities are invoiced for \$5.07

- ▶ June Invoice:

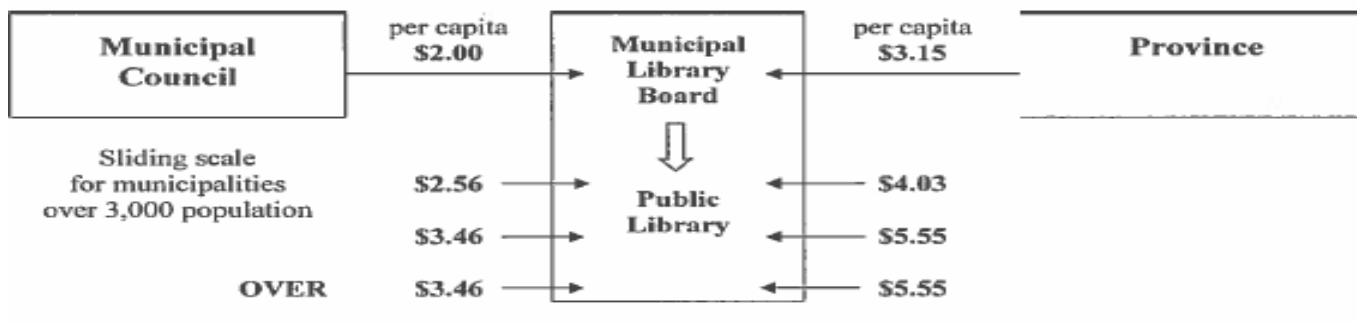
The local municipal library boards are invoiced for \$5.07

- ▶ Book allotment is taken out of the Municipal and the County portion of the levy
@ \$2.15 per capita
- ▶ Book Allotment is placed in the libraries fund account the first week of January
- ▶ Book allotment money is rolled over from one year to the next

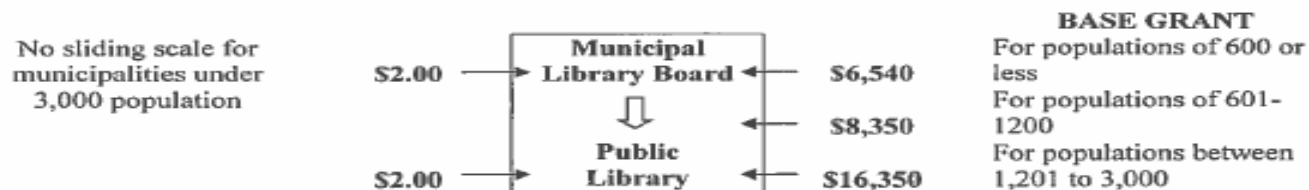
The Book Allotment

FUNDING OF PUBLIC LIBRARIES

In order to receive a provincial operating grant for its library, a municipality must fund the library board at a minimum level of \$2.00 per capita. If the municipality claims back rent, utilities, etc., the remaining money must be at least \$2.00 per capita. In order for municipalities with populations of over 3,000 to qualify for the maximum provincial grant, the municipality must contribute at least \$3.46 per capita. If a municipality over 3000 population funds its board below \$3.46, the provincial grant is based on a sliding scale calculated at 1:1.575.



For Small Population Libraries Minimum Grants

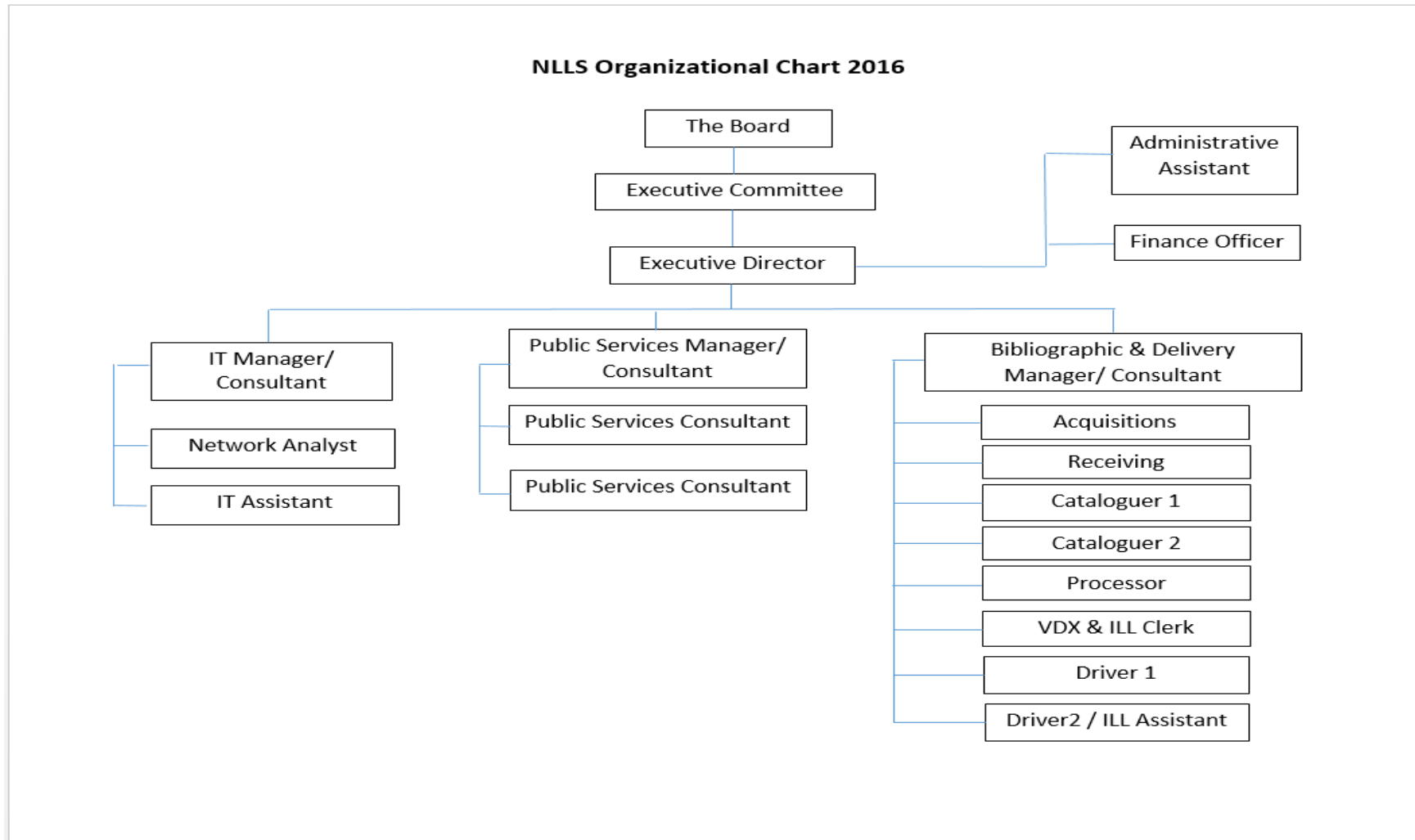


Municipality

County

System.

NLLS as an Organization



Organization Departments

- ▶ Administration
- ▶ Bibliographic Services
- ▶ IT
- ▶ Public services

Thank You!

The background features abstract, overlapping geometric shapes in various shades of blue, ranging from light sky blue to deep navy blue. These shapes are primarily located on the right side of the frame, creating a modern, layered effect against the white background.