

**BYLAW NO. 04/16
A BYLAW OF THE TOWN OF LAMONT
TO AMEND THE MUNICIPAL DEVELOPMENT PLAN OF THE TOWN OF
LAMONT**

WHEREAS the Municipal Government Act, R.S.A. 2000, as amended ("the Act") provides that a Municipal Council may amend its Municipal Development Plan.

WHEREAS the Council of the Town of Lamont wishes to amend its Municipal Development Plan as it affects certain lands.

NOW THEREFORE the Council of the Town of Lamont, duly assembled, enacts as follows.

1. Bylaw No. 06/07 the Municipal Development Plan of the Town of Lamont, as amended, is hereby further amended as follows:

The Future Land Use Map, is hereby amended by designating the following lands, which are currently designated Residential to "Highway Commercial"

- a. Lots 12 & 13, Block 6, Plan 092-1228

The area to be designated Highway Commercial is shown on Schedule "A" of this Bylaw.

2. Bylaw No. 06/07 the Municipal Development Plan of the Town of Lamont, as amended, is hereby further amended as follows:

The Future Land Use Map, is hereby amended by designating the following lands, which are currently designated Institutional/Park to "Highway Commercial"

- a. Lots 5 & 7, Block 9, Plan 812-2388
- b. Lots 10 – 23, block 10, Plan 102-7124
- c. 55, RLY, 4217S

The area to be designated Highway Commercial is shown on Schedule "B" of this Bylaw.

READ A FIRST TIME IN COUNCIL THIS 8th, DAY OF MARCH, A.D. 2016,

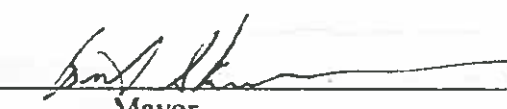


Mayor




Chief Administrative Officer

READ A SECOND TIME IN COUNCIL THIS 29th DAY OF May, A.D. 2016,



Mayor



Chief Administrative Officer

READ A THIRD TIME IN COUNCIL THIS 29th DAY OF May, A.D. 2016,



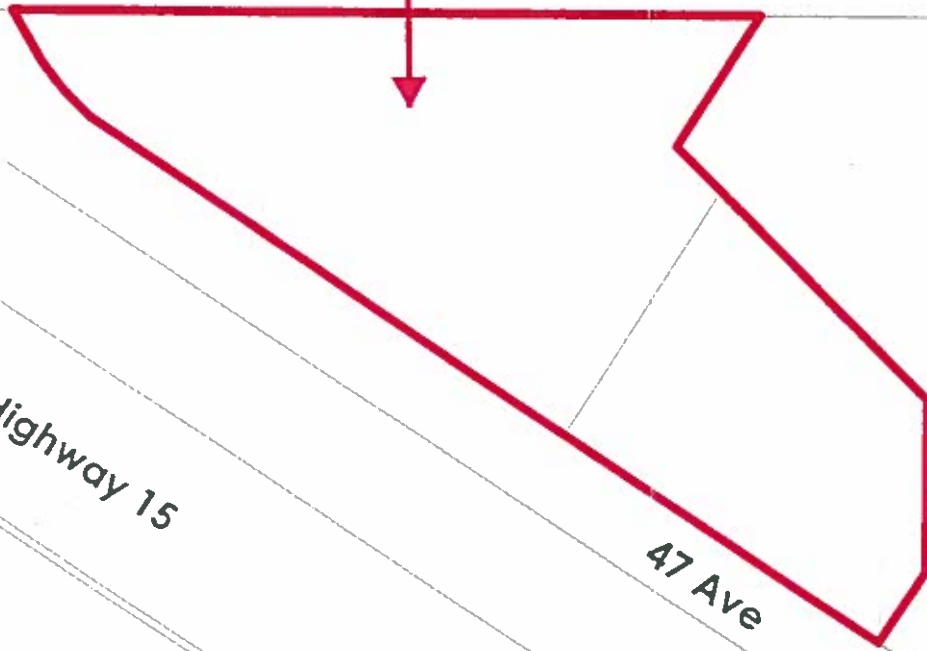
Mayor



Chief Administrative Officer



**Lots 12 & 13, Block 6, Plan 092-1228
From Residential to Highway Commercial**



Highway 15

47 Ave

52 Ave

Town of Lamont Schedule A

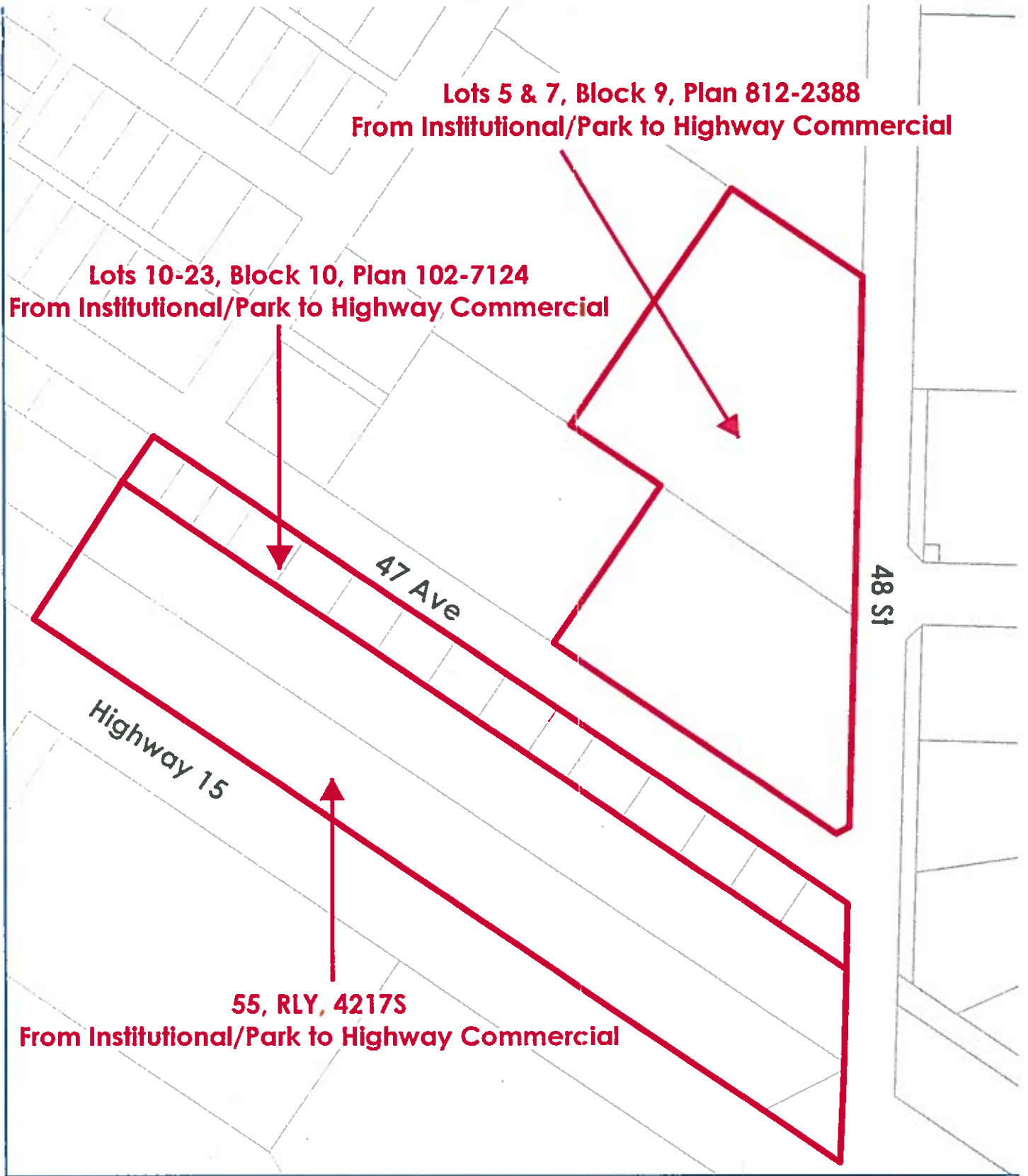
Digital Information: Geogracis and Altalis
Projection: UTM NAD 83 12N



Lots 5 & 7, Block 9, Plan 812-2388
From Institutional/Park to Highway Commercial

Lots 10-23, Block 10, Plan 102-7124
From Institutional/Park to Highway Commercial

55, RLY, 4217S
From Institutional/Park to Highway Commercial



Town of Lamont Schedule B

<p>Digital Information: Geogris and Altalis Projection: UTM NAD 83 12N</p>	<p>0 45 90 M</p>	<p>NORTH</p>	
--	------------------	--------------	--