

Techfibre Industries

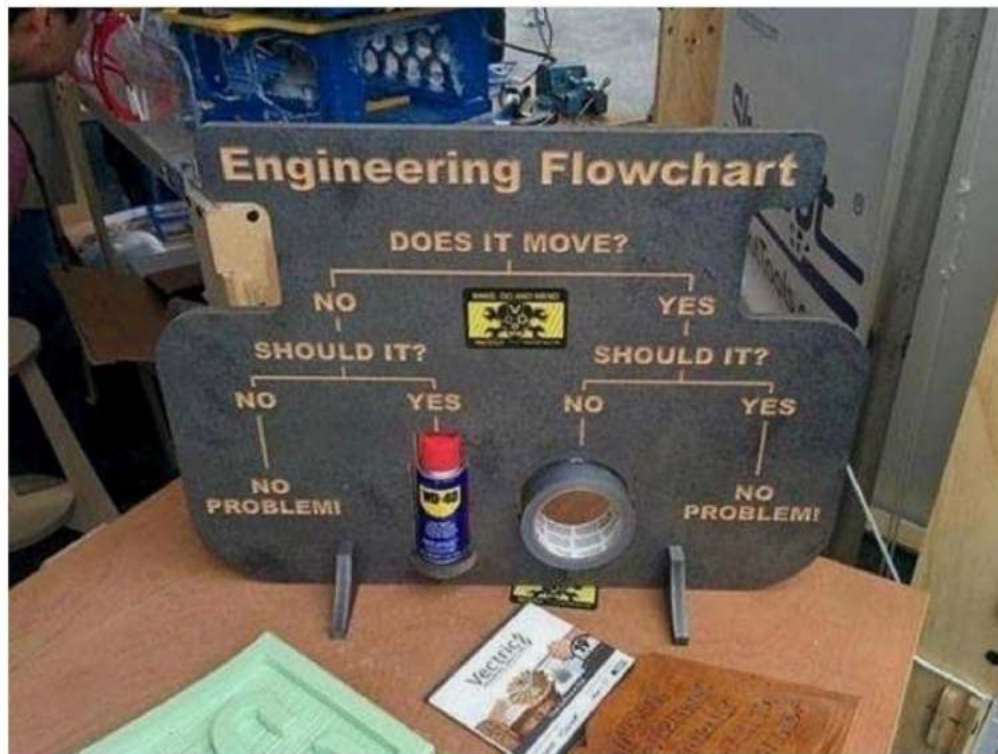
Process Engineering Services

Laura McIlveen, P. Eng.

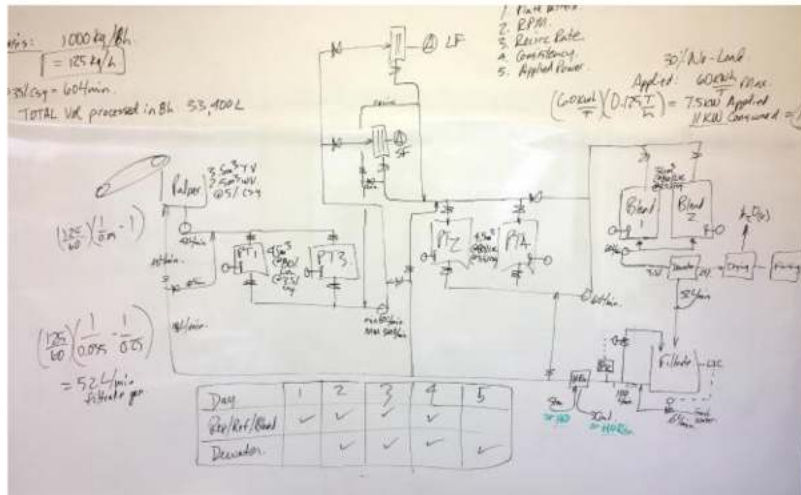
Industrial Hemp Opportunities Workshop

February 7, 2019

What people think we do



What we actually do...



- Define project scope, scale, location, timing
- Process Drawings
- Mass and Energy Balances
- Develop research plans to fill gaps
- Equipment selection
- Capital Costs and Operational Cost Estimates
- Perform Safety and Risk Assessments
- We also troubleshoot existing facilities and provide on-going operational support.

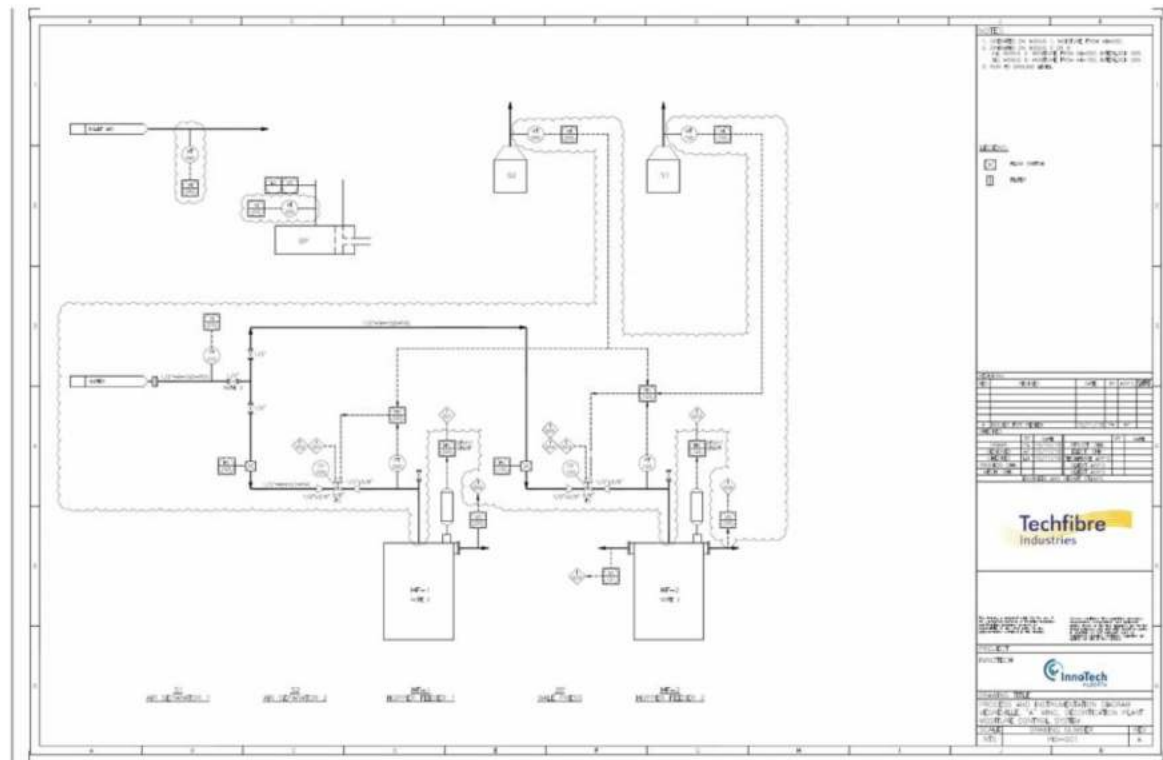
Techfibre Team



- Techfibre is unique in that our experience is in Biomass, Agriculture, and Forestry
- Have completed many Industrial Hemp projects
- Techfibre has numerous contacts in the business and R&D communities

Example: Decortication Plant Upgrade

Moisture Control and Addition Process



Other Project Examples



Thank you!

Laura McIlveen, P. Eng.

laura@techfibreind.ca

587-984-0394

www.techfibreind.ca