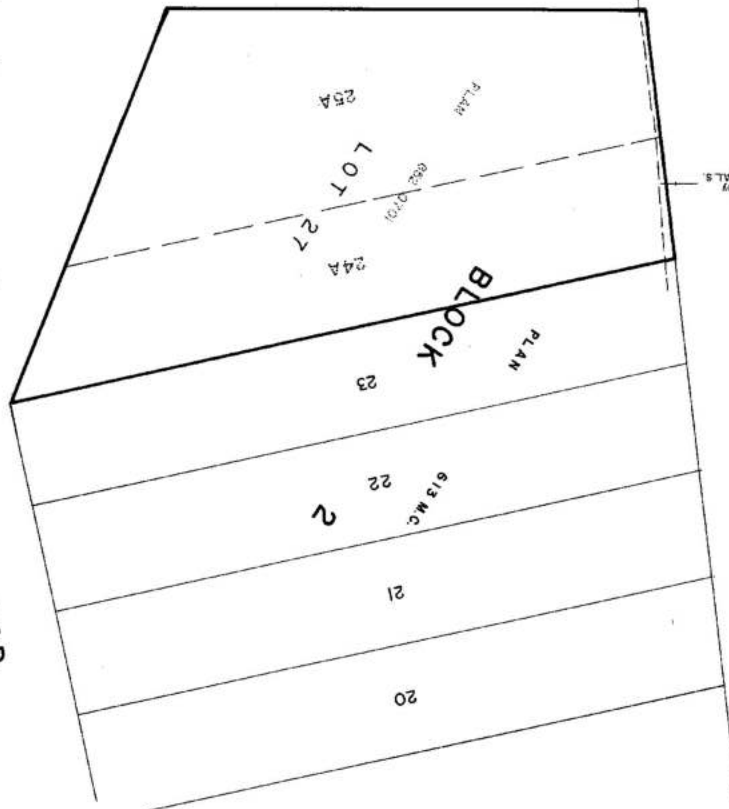


882 3030

Pigeon
Lake

Lake Bank by
D.S. Gilmore, A.L.S.
Jan. 1985



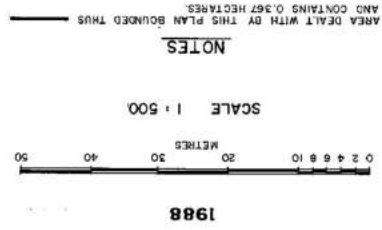
PLAN 842 1668
43

PINKSTON AVENUE

SILVER BEACH ROAD
BLOCK 3



ABLE HOLDINGS LTD.
(C. of I. 882 035 714)
M. K. Gilmore
P.R.S.
M. K. Gilmore
S.E.C.



GILLMORE SURVEYS (ARCTIC) LTD.
7322-101 AVENUE, EDMONTON
W.S. No. 88-4792

DESCRIPTIVE PLAN
SHOWING CONSOLIDATION OF
LOTS 24A AND 25A-BLOCK 2-PLAN 852 0701
IN THE
N.W.1/4 SEC. 11-TR 47-R.28-W4M.
PIGEON LAKE - ALBERTA
SUMMER VILLAGE OF SILVER BEACH
1988

PLANNING

SURVEYOR

LAND TITLES OFFICE

PREPARED IN ACCORDANCE WITH
SECTION 83-1 OF THE LAND
TITLES ACT.
M. K. Gilmore
A.L.S.

PLAN No. 882 3030
ENTERED AND REGISTERED
ON DEC 16 88
INSTRUMENT NO. 882301471
A.L.S.

885 3030

32
150
6

882 3030