

N.E. 1/4 SEC. 1 TWP. 50 RGE. 21 W. 4 Mer.

S.W. 1/4 SEC. 7 TWP. 50 RGE. 20 W. 4 Mer.

S.E. 1/4 SEC. 7 TWP. 50 RGE. 20 W. 4 Mer.

ROAD PLAN 8312 M.C.

N.E. 1/4 SEC. 1 TWP. 50 RGE. 21 W. 4 Mer.

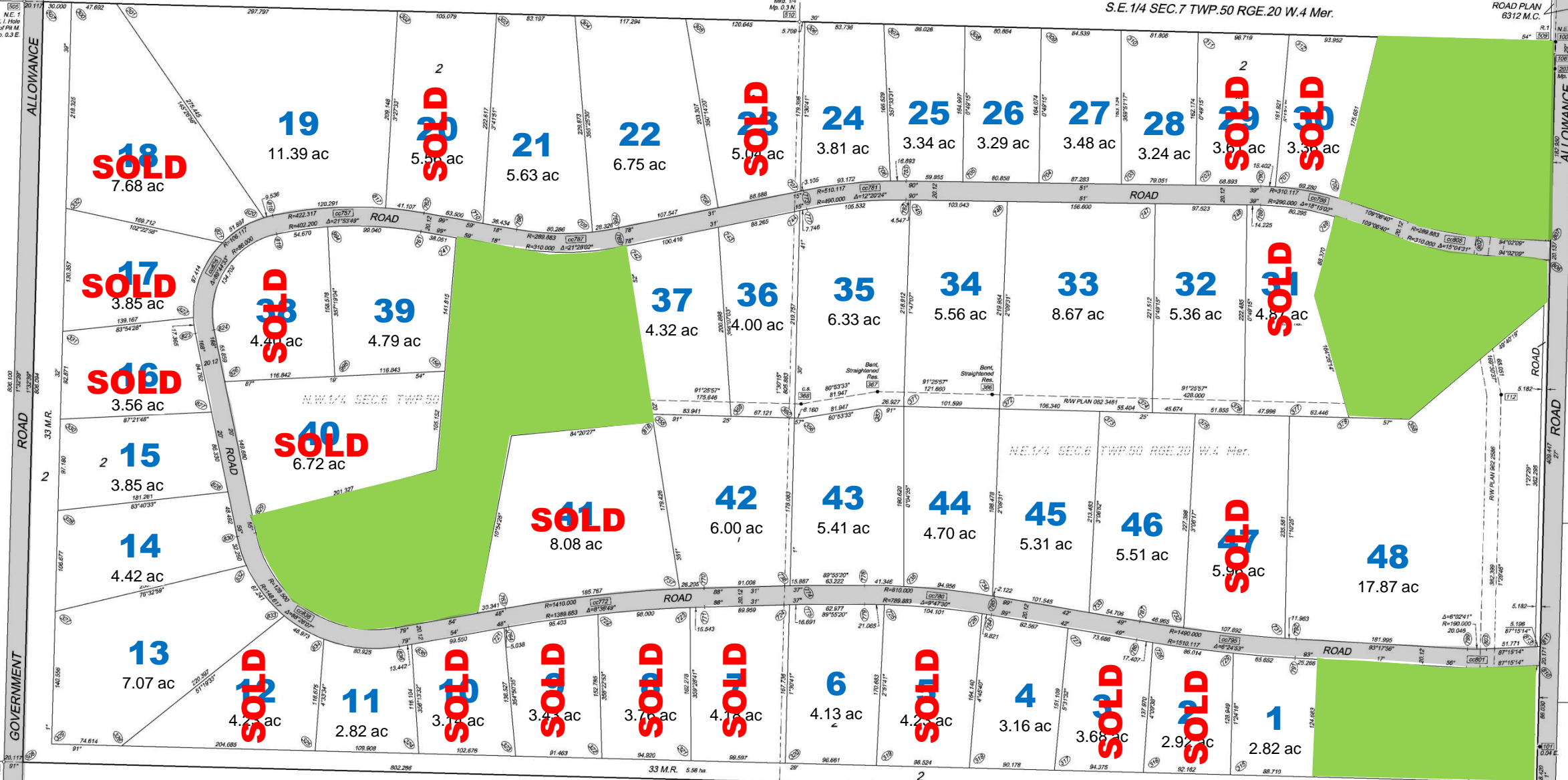
N.W. 1/4 SEC. 5 TWP. 50 RGE. 20 W. 4 Mer.

N.W. 1/4 SEC. 31 TWP. 49 RGE. 20 W. 4 Mer.

N.W. 1/4 SEC. 5 TWP. 50 RGE. 20 W. 4 Mer.

N.E. 1/4 SEC. 31 TWP. 49 RGE. 20 W. 4 Mer.

N.E. 1/4 SEC. 31 TWP. 49 RGE. 20 W. 4 Mer.



N.W. 1/4 SEC. 31 TWP. 49 RGE. 20 W. 4 Mer.

S.E. 1/4 SEC. 6 TWP. 50 RGE. 20 W. 4 Mer.

N.E. 1/4 SEC. 6 TWP. 50 RGE. 20 W. 4 Mer.

PLAN 984 T.R.

ROAD

N.E. 1/4 SEC. 31 TWP. 49 RGE. 20 W. 4 Mer.